

مجموعة سهيل العرب للتجارة
Suhail Al Arab Trading Group

مؤسسة الشفق العربي التجارية
Establishment SHAFAK AL-ARAB Commercial

المملكة العربية السعودية
Kingdom of Saudi Arabia



Establishment SHAFAK AL-ARAB Commercial :

is a renowned confectionery company specializing in the import and distribution of globally sourced high-quality chocolates. With a focus on delivering exceptional chocolate experiences, we cater to the Middle East market, bringing the finest international chocolates to confectionery enthusiasts. Our commitment to quality, variety, and customer satisfaction has firmly established us as a trusted name in the confectionery industry.



INTRODUCTION

MISSION



Our mission is to bring the world of chocolate to the Middle East, offering a diverse range of premium chocolates from around the globe. We are dedicated to providing chocolate lovers with access to the finest international brands, ensuring an extraordinary indulgence that surpasses expectations. By curating an exceptional collection of chocolates, we aim to delight taste buds and create memorable moments of pure enjoyment.





Product Selection

and Quality Assurance

At Establishment SHAFAK AL-ARAB Commercial . we take great pride in our selection of imported chocolates, carefully handpicked from renowned brands worldwide. We prioritize offering a wide variety of flavors, textures, and chocolate styles to cater to diverse palates and preferences. Our commitment to quality is unwavering,

We ensure the following:

Global brands

We collaborate with established and celebrated chocolate brands from various countries, including Switzerland, Belgium, France, the United States, and more. Our portfolio showcases a curated selection of chocolates, encompassing pralines, bars, ganaches, and other premium chocolate creations.

Quality control

We have a rigorous quality control process in place to ensure that every chocolate we import meets the highest standards. Our team of experts evaluates each brand and product based on factors such as taste, texture, ingredients, ethical sourcing, and manufacturing practices. Only chocolates that meet our stringent criteria make it into our collection.

Freshness and shelf life

We understand the importance of delivering fresh and delightful chocolates to our customers. We work closely with our suppliers to ensure that the chocolates we import have a significant shelf life, allowing customers to enjoy them at their best.

Authenticity and origin

We place a strong emphasis on the authenticity and origin of the chocolates we import. We collaborate with brands that uphold traditional chocolate-making techniques and source their ingredients responsibly, ensuring a genuine and unique chocolate experience.

Market Focus

While our focus is on the Middle East market, our imported chocolates cater to a diverse customer base, including individuals, corporate clients, and gifting occasions. We recognize the Middle East's appreciation for fine chocolates and aim to provide an unparalleled selection that captivates chocolate lovers throughout the region.



SOCIAL RESPONSIBILITY

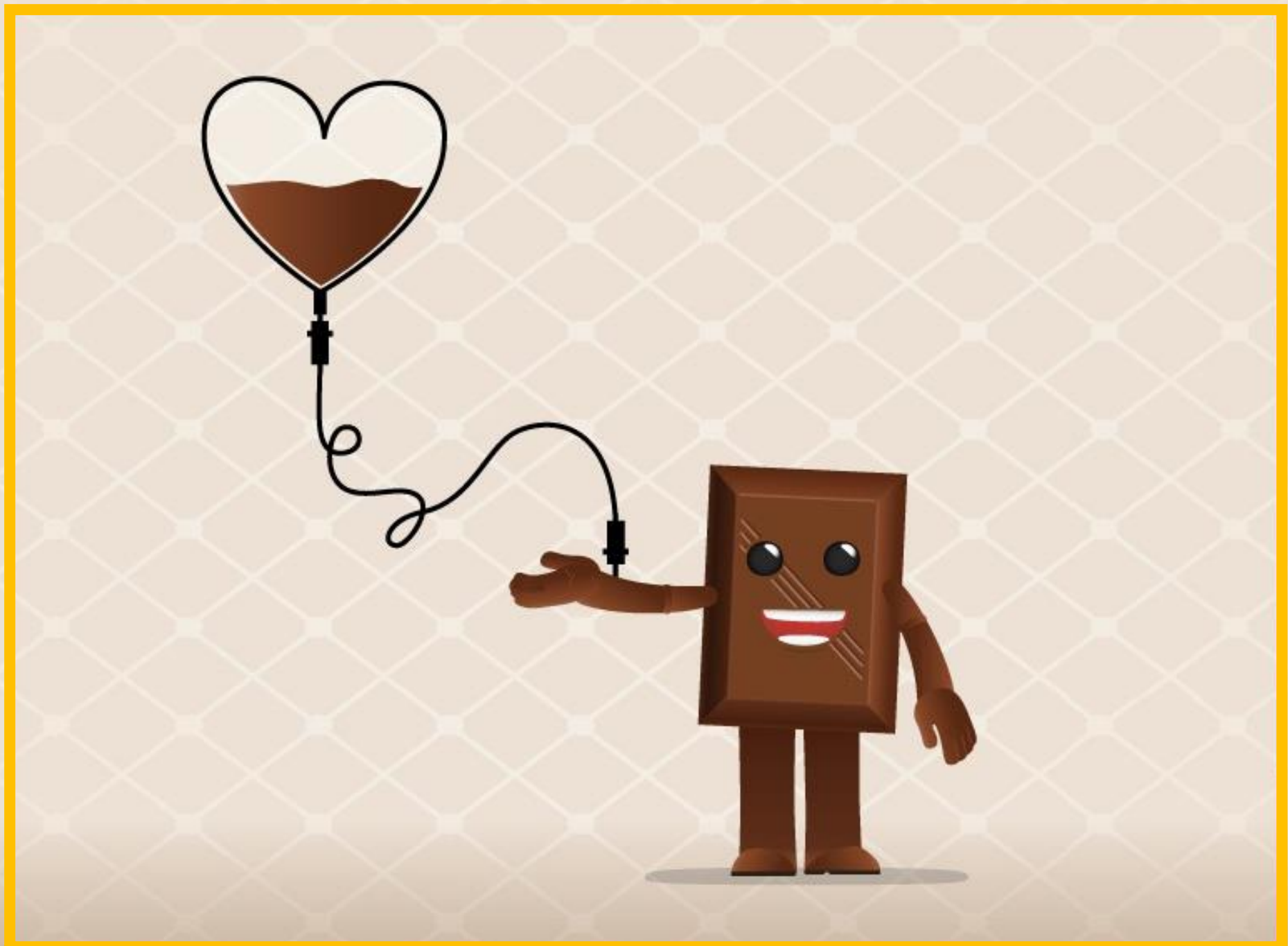
At Establishment SHAFAK AL-ARAB Commercial , we believe in ethical business practices and social responsibility. We actively support fair trade initiatives, working with brands that promote sustainable sourcing, support local communities, and provide fair compensation to cocoa farmers. By choosing our imported chocolates, customers contribute to these efforts and help create a positive impact.



"Indulge in a cultural delight where chocolate and tradition entwine, leaving your taste buds captivated."




**"Your well-being, our
priority: Nurturing your
health through our
exceptional products."**





"Savor the goodness of our health-conscious chocolate: A delectable treat that cherishes your well-being."



Speculoos is very suitable
as a seasoning in ice cream,
desserts or chocolate or
even as a topping

Conclusion

A close-up photograph of a white bowl filled with finely chopped, vibrant green chocolate shavings. The shavings are piled high, creating a textured, granular appearance. The background is softly blurred, showing more of the bowl and the shavings. The entire image is framed by a thick yellow border.

Establishment SHAFAK AL-ARAB Commercial is dedicated to bringing the world's finest chocolates to the Middle East. Through our curated selection of globally sourced brands, we aim to delight confectionery enthusiasts with extraordinary chocolate experiences. With a commitment to quality, variety, and customer satisfaction, we invite you to explore our collection and indulge in the rich and diverse flavors of exceptional international chocolates. Trust [Company Name] to satisfy your chocolate cravings and elevate your moments of indulgence to new heights.

Contact us

Mobile: +966 556915805
+971555320971
+971582245874

Fax: +966 11 2050045.

PO Box:
92543 – Riyadh 11683 Saudi Arabia.

Email:
GM@suhailarabgroup.com
sales@suhailarabgroup.com
purch@suhailarabgroup.com
mark@suhailarabgroup.com

Website:
<https://suhailarabgroup.com>

